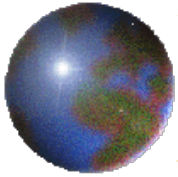




# *Adaptation Strategies of Coffee Producers in Coatepec, Veracruz , Mexico to Climate Variability and Change*

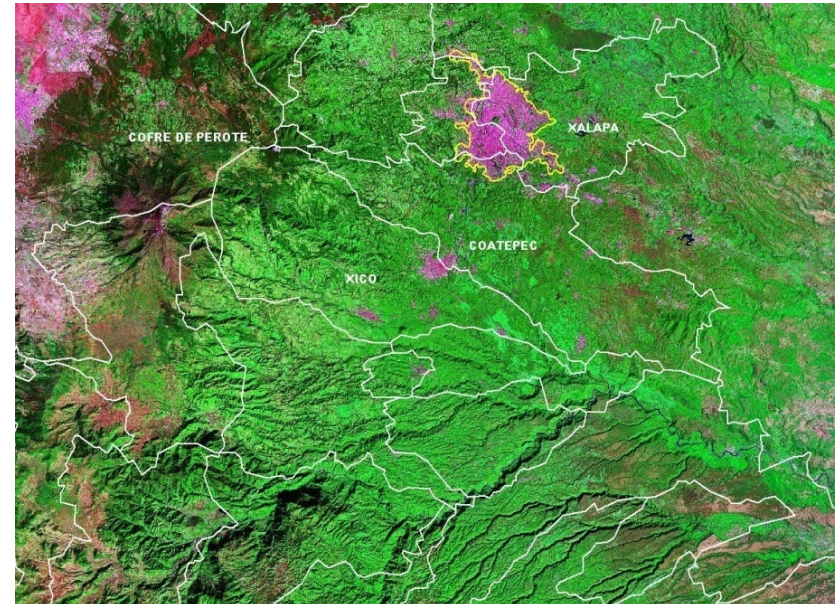


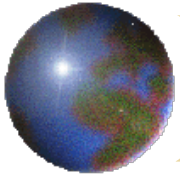
Cecilia Conde, A. Monterroso, G.  
Rosales, M. Pérez



## *The region:*

- ☉ Coffee plantations – rainforests – biodiversity
- ☉ Production: 90.2% (2<sup>nd</sup> in Mexico)
- ☉ Producers: Long tradition and high level of organization: *Coffee Regulating Council of Coatepec*

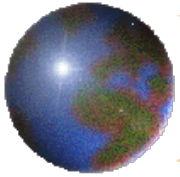




## *The current problems (challenges):*

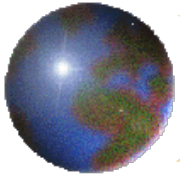
- ❖ Plantations:
  - ❑ Low density and low yields
- ❖ Producers' Age (>60)
- ❖ Low prices,
- ❖ Lack of financial / technical support
- ❖ Increase in extreme climatic events





## *Methods & Key outputs*

- ✚ Adaptation Policy Framework:
- ✚ Participatory methods (workshops and focus groups)
- ✚ Environmental Services (CO<sub>2</sub>, micro-climate, biodiversity); biological control of pests.
- ✚ History of: climate; potential impacts; vulnerability and coping capacities to climate variability and change. Econometric model
- ✚ *Projections of: climate, impacts, V&A*



## *Opportunities.*

- ✚ Strengthen research between UV + UNAM with the Coffee Council
- ✚ Partial results are being presented in a brochure to the candidates to the new Government of the State (July, 2010).
- ✚ Payment of Environmental services: adaptation now; viable in the future.